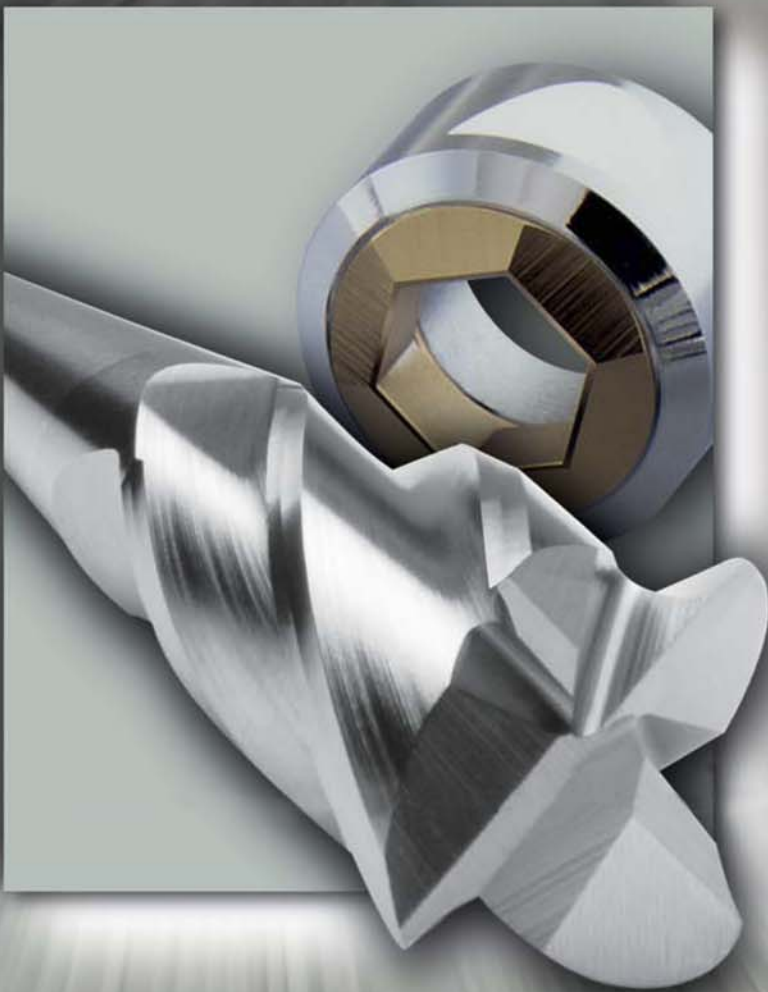


***Rapid Lap polishers
make smooth work
of hard-to-polish
parts 10-25X faster!***

Rapid Lap is the incredibly easy-to-use polishing machine that creates a mirror-smooth finish even on hard-to-polish parts. The Rapid Lap uses an exclusive, automatic, high-speed multi-cone technology - and a unique abrasive medium to do away with the need for manual polishing punches, dies, small-sized molds and other intricate parts.



Rapid
LAP

Okamoto

Okamoto Corporation

www.okamotocorp.com

Rapid Lap makes polishing a wide variety of materials and irregular shapes extremely safe and easy:

Rapid Lap dramatically shortens cycle-time for final polishing. Its unique lapping medium is a perfect balance of moisture and abrasive particulates - including diamond particles. Using a hurling device combined with air pressure, Rapid Lap's exclusive multi-cone lapping projects the abrasive lapping media in multiple high-speed passes to polish even the most irregular shapes to a mirror-sheen finish.

Rapid Lap's exclusive benefits include:

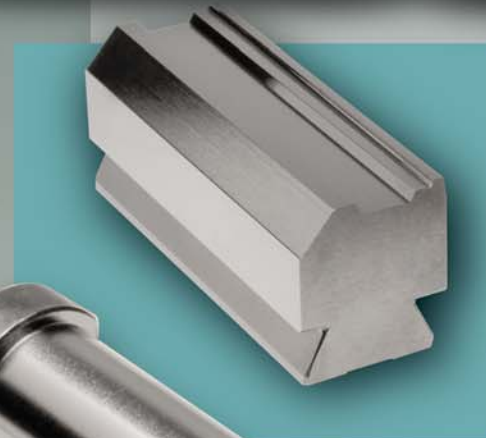
- Uniform mirror finishing avoids misshaping and minimizes surface marring to safely polish even the most intricate parts.
- Enhances durability and prolongs the lifespan of molds and dies (especially cold forging).
- Improved PVD/CVD Coating.
- User-friendly control system, straightforward design and operation, and maintenance requirements enable operators to master the Rapid Lap with minimal training.
- Low running cost - the abrasive particulate solutions can be used over and over for long periods.
- Environmentally friendly operation - Rapid Lap machines are quiet and produce little to no waste, minimizing discharges of oil and dust for disposal.
- Machine is supplied with all the media and accessories - no hidden costs.

Reasons to use Rapid Lap:

- Lap and polish 10 - 25 times faster
- Get Ra 24 finish to Ra1.5 in 30 seconds
- Improves tool life up to 300%
- Hard-to-reach areas are no problem
- Virtually no material is removed
- Can be used on most all metals

APPLICATIONS:

- Cutting Tools
- Forming Tools
- Injection Molds
- Complex Shapes
- Punches
- Pins & Guide Rods
- Manifolds
- Jewelry
- Anything Smooth



Specifications

Standard Model - YT-100

Power Requirement:	1-phase (100V)
Air Pressure:	72psi (0.5MPa)
Work Envelope W x D x H:	14" x 10" x 9"

Machine size

Small footprint:	18.5" x 25.6" x 49"
Height:	51"
Weight:	260 lbs

Standard Model - YT-300

Power Requirement:	3-phase (200V)
Air Pressure:	72psi (0.5MPa)
Work Envelope W x D x H:	19" x 16" x 13"

Machine size

Small footprint:	27.6" x 35.4" x 63"
Height:	63"
Weight:	550 lbs

Standard Model - YT-300H

Features clamshell design doors for ease of loading/unloading workpiece

Power Requirement:	3-phase (200V)
Air Pressure:	72psi (0.5MPa)
Work Envelope W x D x H:	19" x 16" x 13"

Machine size

Small footprint:	27.6" x 35.4" x 63"
Height:	63"
Weight:	550 lbs

Standard Model - YT-500

Power Requirement:	3-phase (200V)
Air Pressure:	100psi (0.7MPa)
Work Envelope W x D x H:	36" x 26" x 17"

Machine size

Small footprint:	36" x 87" x 53"
Height:	87"
Weight:	1,025 lbs

Okamoto

Emerging Abrasives Technology

Okamoto Corporation

1342 Barclay Boulevard Buffalo Grove, IL 60089

Tel: (847) 520-7700 Fax: (847) 520-7980

www.okamotocorp.com